

## AutoCCC

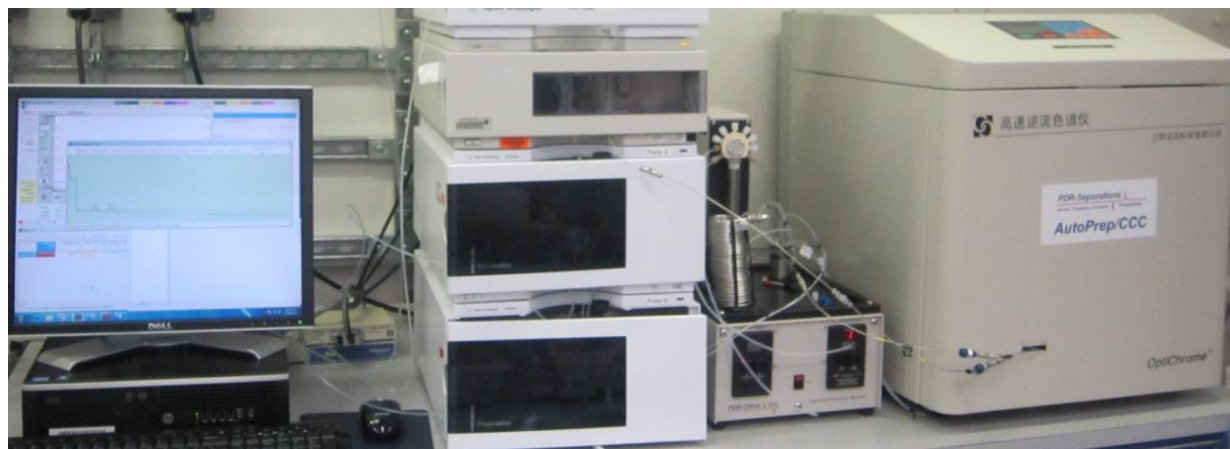
Automated  
 CounterCurrent  
 Chromatography

## Automated Method Development and/or Prep CCC

- 10 or 20 Bottle Mixer blends eluents from wide range of solvents for screening.
- Intelligent Injector/Collector injects uL/mL from 8 inlet ports (screen multiple samples, dual-port prep injections to balance MP/SP, etc.) and collects to 9 ports/fractions.
- Analytical/Prep and NP/RP automated valves set scale/mode for Spectrum<sup>®</sup>, etc.
- AutoCCC Software controls hardware, data, and methods/sequences/collections.
- Methods/Sequences, Installation, Training, and Support Included.



AutoCCC with 2 Agilent 1100<sup>®</sup> analytical Pumps/DAD and Spectrum<sup>®</sup> from Dynamic Extractions



AutoCCC with 2 Agilent 1200<sup>®</sup> prep Pumps/DAD and OptiChrome<sup>®</sup>-1000 from CounterCurrent Technology

### Method Development:

- Fully automated method development, advanced capabilities, mixes from 10/20 solvent bottles for scouting and optimization.
- Injector has 8 inlet ports and uL to mL capacity.
- Analytical/Prep and NP/RP automated valves set scale/mode as specified in methods for dual-winding systems like Spectrum<sup>®</sup>.
- Scouting Methods/Sequences included.
- Data Processing Tool (DPT) finds good methods instantly by filtering chromatograms with selectable criteria such as minimum area, relative area, number of peaks, etc.

### Prep:

- Automated prep, advanced capabilities for 24/7 operations.
- Unique real-time algorithms support dynamic peak detection and robust peak collection, even in changing conditions.

- Collect based on time, +/- voltage, +/- slope, combinations.
- Intelligent Injector can draw from 2 inlet ports to maintain mobile and stationary phase equilibrium.
- Collector with 9 ports/fractions.

### Software:

- Same user interface for method development and prep.
- Hardware independent methods/sequences.
- Controls hardware (CCC, pump, DAD, etc.) from many suppliers.
- Flexible, accepts inputs from UV, polarimeter, pH etc.
- Customizations available upon request.

### Support:

- Personalized technical support, specializing in custom configurations/installations and remote support.